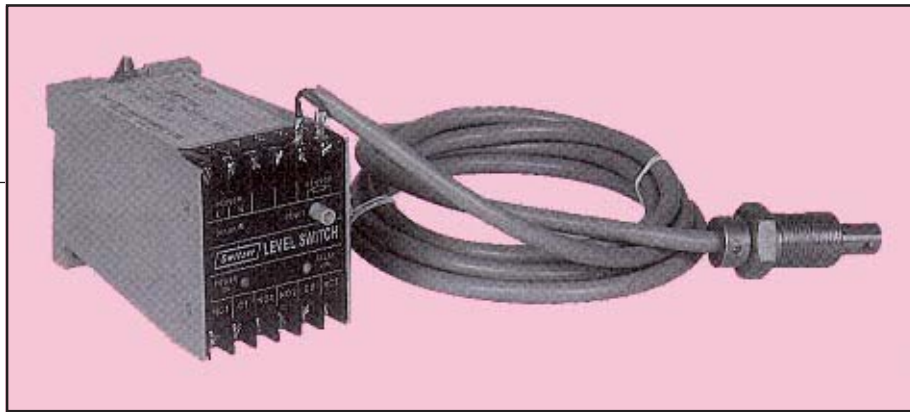




# LEVEL SWITCH

# K – 5720

- SEMI CONDUCTOR SENSOR ● CONDUCTIVE & NON-CONDUCTIVE LIQUIDS ●
- MEDIUM COMPATIBLE WETTED PARTS ● LONG LIFE – NO MOVING PARTS ●
- EXCELLENT REPEATABILITY ●



Level Switch Model K-5720 is exclusively designed to monitor level of conductive & non-conductive liquids, such as chemicals, lubricating oil, compressor seal oil, water.

The level is sensed by a PTC thermistor, which is to be fixed in the vessel or lube oil tank or sump at a location where the presence or absence of the medium in terms of level is to be monitored.

When the tank is filled up, the level sensor is in contact with the liquid, and exhibits a low resistance, so the relay is in 'OFF' condition. When the liquid level goes down, the sensor is exposed to air and exhibits high resistance, switching the relay 'ON'.

When the liquid level is restored back to the required normal level and encompasses the sensor, its resistance once again reduces. The relay returns to the normal status automatically. An optional manual reset facility can be provided to restore the relay to its normal status. This feature ensures that the operating personnel confirm the availability of the liquid, while running an equipment.

Status indicating LEDs are provided for Power 'ON' condition Red and Relay 'ON', absence of medium, Yellow.

A 2 core cable of 2 metres length is provided with sensor as standard. Longer cable upto a maximum of 5 metres can also be provided if required by user.

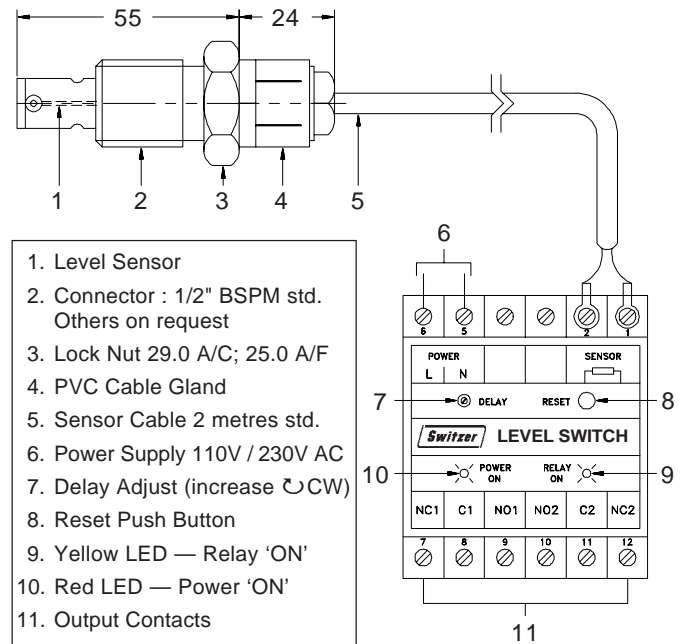
## TECHNICAL SPECIFICATIONS

<b>Input</b>	PTC Thermistor with 2 metres. 2 core cable (standard)	<b>Sensor Break</b>	Relay Permanently "ON"
<b>Output</b>	1 DPDT Contact 5A at 230 V AC / 28 V DC	<b>Status Indication</b>	By LEDs Red — Power "ON" Yellow — Relay "ON" (Medium not present – Low level)
<b>Power Supply</b>	110 V / 230 V AC ± 10% 50 Hz	<b>Process Connection</b>	1/2" BSP (M) Other connections on request
<b>Max. Media Temp</b>	90°C	<b>Switch Enclosure</b>	ABS Plastic. DIN rail mount.
<b>Sensor to Switch Connection</b>	2 × 1.5 mm <sup>2</sup> cable 2 metres long standard. Maximum 5 Metres.	<b>Size</b>	60 × 70 × 110 mm
<b>Response</b>	5 – 15 seconds approx.		

## ALARM SEQUENCE TABLE

Level	Sensor	Auto Reset		Manual Reset	
		Relay	LED (Yellow)	Relay	LED (Yellow)
Normal	in Medium	OFF	OFF	OFF	OFF
Low	in Air	ON	ON	ON	ON
Normal	in Medium	OFF	OFF	ON	ON
Normal (Reset Pressed)	in Medium	--	--	OFF	OFF

## EXTERNAL CONNECTION



## ORDERING INFORMATION

### ORDERING CODE

#### Power Supply

110V AC \_\_\_\_\_

230V AC \_\_\_\_\_

#### Medium \*

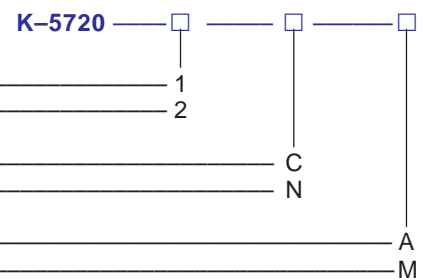
Conductive \_\_\_\_\_

Non-Conductive \_\_\_\_\_

#### Reset

Auto \_\_\_\_\_

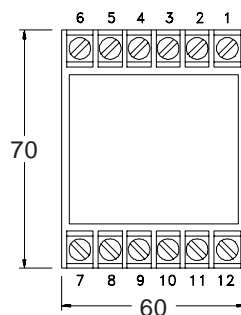
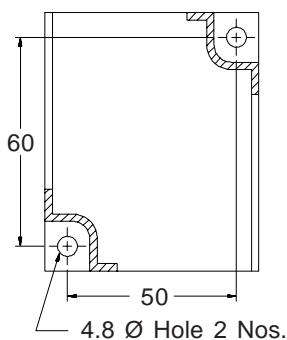
Manual \_\_\_\_\_



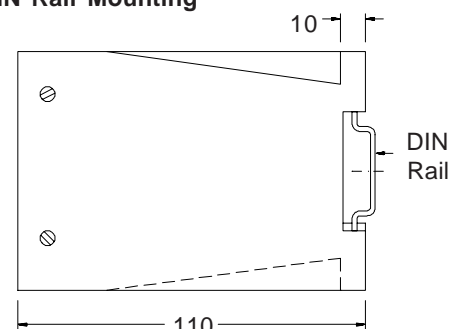
\* Please give details of process medium while ordering.

## MOUNTING DIMENSION

### Wall / Surface Mounting



### DIN Rail Mounting



All Dimensions in mm

*Prior notification of changes in specification is impracticable due to continuous development.*

FOR **SWITZER'S** OFFICES IN INDIA

CHECK AT:

<http://www.switzerinstrument.com/offices.htm>